

Analysis of a short term AAPL trade

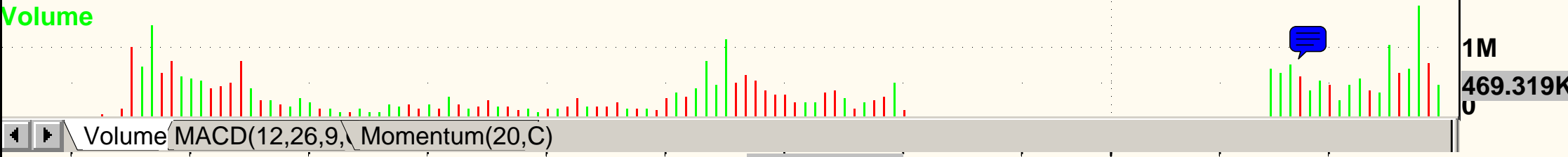
5 Minute Chart Snap Shot

Entry @ \$58.12, 02/11/2005 14:34



59.49  
 59.354  
 59.086  
 59.00  
 58.6945  
 58.50  
 57.998  
 57.50  
 57.00  
 56.8665

Copyright © 2005 eSignal.



1M  
 469.319K  
 U

# (AAPL - APPLE COMPUTER INC,15) Dynamic,0:00-24:00

15 Minute Chart Snap Shot

2. Entry based on 5 minute chart high volume break out of previous highs in sync with broad market strength.

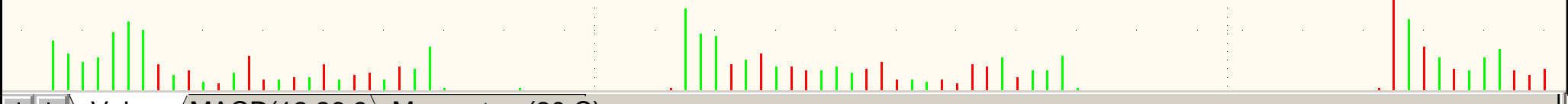
1. Entry @ \$58.12, 02/11/2005 14:34

3. Exit @ 61.88, 03/11/2005 18:00

4. Exit based on broader market stalling and loss of momentum. Exit based on 15 minute close below 20MA. (+\$3.76)

Copyright © 2005 eSignal.

Volume



Volume MACD(12,26,9) Momentum(20,C)

15:00 17:00 19:00 21:00 23:00 14:00 16: 11/03 18:00 20:00 22:00 11:00 13:00 15:00 17:00

11/03/05

11/04/05

62.00  
61.8418

61.2886

61.00  
60.858

60.5945

60.00

59.00

58.00

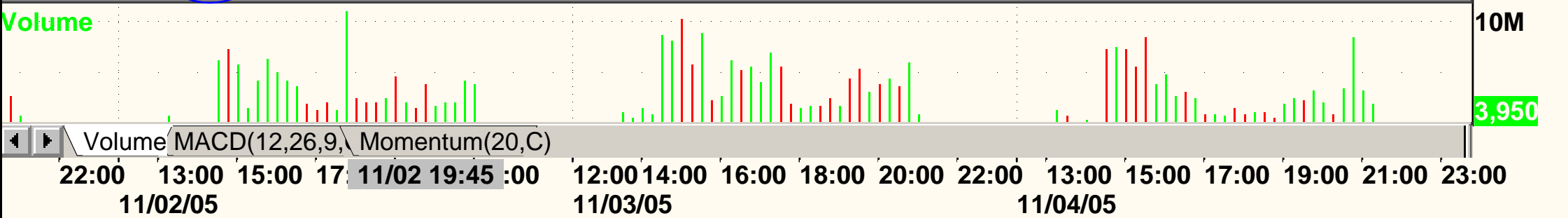
5M

1.001117M

(QQQ - NASDAQ 100 TR,15) Dynamic,0:00-24:00



40.20  
 40.187  
 40.036  
 39.9975  
 39.80  
 39.7028  
 39.60  
 39.40  
 39.20  
 39.00  
 38.80



# (AAPL - APPLE COMPUTER INC,D) Dynamic,0:00-24:00

AAPL Daily Chart Snap Shot



Clear up trend + Bullish Engulfing pattern here

Entry & Exit points